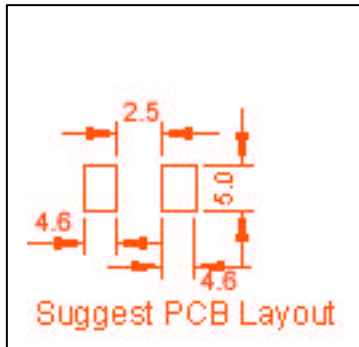
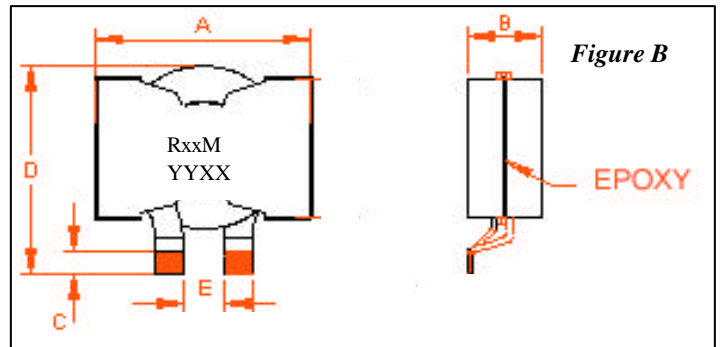
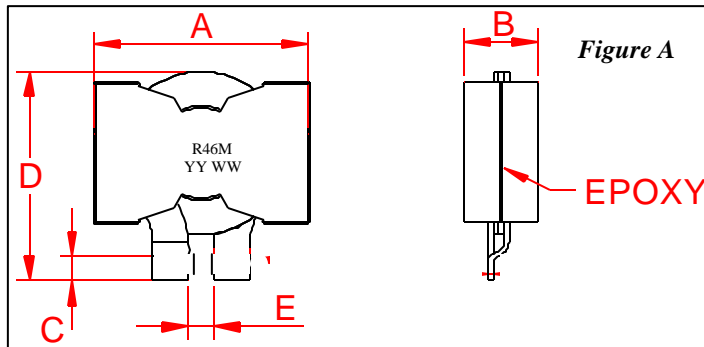
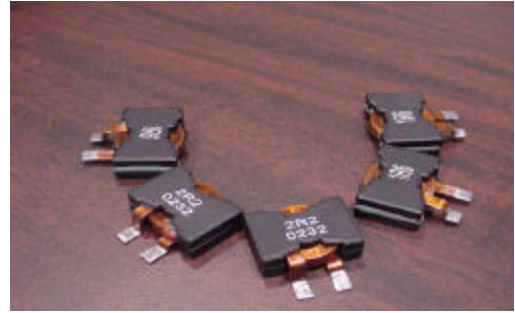


PQ87xx Series

FEATURES:

- Planar design high current chokes
- Low profile
- High flux material for graduate DC bias roll off performance
- Custom values in ferrite base material are available upon request
- Working frequency up to 600KHz
- Operating temperature range -40°C to $+150^{\circ}\text{C}$
- Coplanarity: 0.1mm



DIMENSIONS: (in mm)

	A Max	B Max	C Min	D ± 0.5	E ± 0.5
PQ8724	22.0	6.0	3.50	22.2	3.94
PQ8728	22.0	7.2	3.50	22.2	3.94

Package quantities: 48 pieces per tray, 864 pieces per box

ELECTRICAL SPECIFICATIONS:

Part Number	L @ 300KHz, 0.25V	DCR $\pm 7\%$	I _{rms}	L @ I _{rms}	I _{max}	L @ I _{max}	Figure
PQ8724A-R47M	0.47 $\mu\text{H} \pm 20\%$	0.73 mOhm	40 A	0.43 μH	60 A	0.40 μH	A
PQ8724B-R47M	0.47 $\mu\text{H} \pm 20\%$	0.73 mOhm	40 A	0.43 μH	60 A	0.40 μH	B
PQ8728A-R60L	0.60 $\mu\text{H} \pm 15\%$	0.73 mOhm	40 A	0.525 μH	60 A	0.485 μH	A
PQ8728B-R60L	0.60 $\mu\text{H} \pm 15\%$	0.73 mOhm	40 A	0.525 μH	60 A	0.485 μH	B
PQ8724A-R90M	0.90 $\mu\text{H} \pm 20\%$	1.05 mOhm	38 A	0.78 μH	48 A	0.73 μH	A
PQ8724B-R90M	0.90 $\mu\text{H} \pm 20\%$	1.05 mOhm	38 A	0.78 μH	48 A	0.73 μH	B
PQ8728A-1R0M	1.00 $\mu\text{H} \pm 20\%$	1.05 mOhm	36 A	0.86 μH	46 A	0.82 μH	A
PQ8728B-1R0M	1.00 $\mu\text{H} \pm 20\%$	1.05 mOhm	36 A	0.86 μH	46 A	0.82 μH	B
PQ8728A-1R6M	1.60 $\mu\text{H} \pm 20\%$	1.40 mOhm	35 A	1.31 μH	43 A	1.25 μH	A
PQ8728B-1R6M	1.60 $\mu\text{H} \pm 20\%$	1.40 mOhm	35 A	1.31 μH	43 A	1.25 μH	B
PQ8728A-2R2M	2.20 $\mu\text{H} \pm 20\%$	1.75 mOhm	33 A	1.69 μH	40 A	1.56 μH	A
PQ8728B-2R2M	2.20 $\mu\text{H} \pm 20\%$	1.75 mOhm	33 A	1.69 μH	40 A	1.56 μH	B

I_{rms} = 40°C temperature rise, I_{max} = 100°C temperature rise

Inter-Technical, LLC, 175 Clearbrook Road, PO Box 535, Elmsford, NY 10547

Phone: 914-347-2474

Fax: 914-347-7230

website: www.inter-technical.com

email: sales@inter-technical.com

Rev. A 11.04.02