

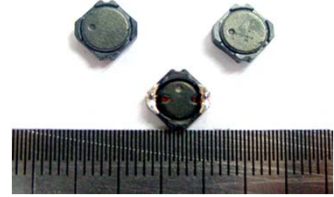


SDRR07630 Series

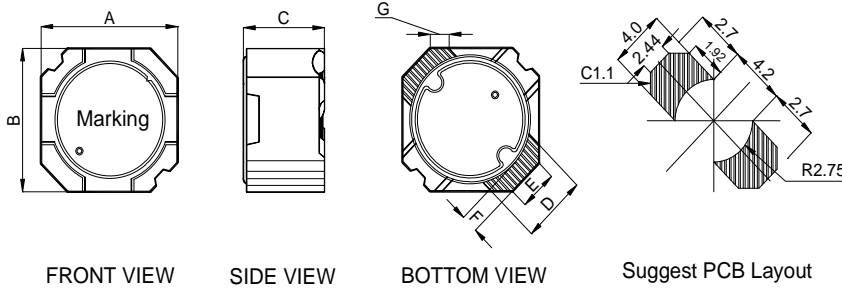


1. Features:

- Ferrite based SMD Inductor with lower core loss.
- Inductance Range:1.2uH to 470uH. Custom values are welcomed.
- High current output chokes, upto 8.0 Amp with max. 35% roll off.
- Low Profile 3.0 mm Max. height .
- Foot Print 7.6 x 7.6 mm Max.
- Ideal for LCD driver,DSC/DVC,Notebook PC and High Density Board Design.
- Operating Temperature Range -55°C to + 130°C, RoHs&HF compliance.



2. Mechanical Dimension(Unit:mm):



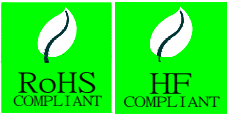
| Type | SDRR07630 | | | |
|------|-----------|---|--------|----|
| A | 7.3 | ± | 0.3 | mm |
| B | 7.3 | ± | 0.3 | mm |
| C | 3.0 | | (MAX) | mm |
| D | 3.5 | | (Nom.) | mm |
| E | 1.7 | | (Nom.) | mm |
| F | 1.3 | | (Nom.) | mm |
| G | 1.3 | | (Nom.) | mm |

3. Electrical Characteristic of SDRR07630 Series:

| Part Number | Inductance (uH) ± 25% | DCR (mΩ) Typ. | DCR (mΩ) Max | Isat ¹ (A) @25°C | L@Isat ¹ (uH) Typ. | Isat ² (A) @105°C | L@Isat ² (uH) Typ. | Irms (A) @25°C | L@Irms (uH) Typ. |
|------------------|-----------------------------|---------------------|--------------------|-----------------------------------|-------------------------------------|------------------------------------|-------------------------------------|----------------------|------------------------|
| SDRR07630-1R2PHF | 1.2 | 6.94 | 8.7 | 8.0 | 0.86 | 6.0 | 1.1 | 6.50 | 1.12 |
| SDRR07630-2R0PHF | 2.0 | 9.87 | 12.4 | 6.5 | 1.43 | 4.5 | 1.7 | 5.80 | 1.75 |
| SDRR07630-2R7PHF | 2.7 | 13.19 | 16.5 | 5.5 | 2.09 | 4.0 | 2.3 | 5.20 | 2.27 |
| SDRR07630-3R6PHF | 3.6 | 15.89 | 20.0 | 4.9 | 2.73 | 3.6 | 3.0 | 4.60 | 3.20 |
| SDRR07630-4R6PHF | 4.6 | 21.12 | 26.4 | 4.4 | 3.43 | 3.0 | 3.5 | 4.00 | 4.13 |
| SDRR07630-5R4PHF | 5.4 | 26.08 | 32.6 | 3.8 | 4.0 | 2.8 | 4.6 | 3.60 | 4.50 |
| SDRR07630-6R8PHF | 6.8 | 34.08 | 42.6 | 3.6 | 5.2 | 2.6 | 6.4 | 3.20 | 6.10 |
| SDRR07630-8R0PHF | 8.0 | 39.18 | 49.0 | 3.2 | 6.2 | 2.4 | 5.8 | 3.00 | 6.80 |
| SDRR07630-100PHF | 10 | 42.95 | 54.0 | 3.0 | 7.8 | 2.1 | 7.1 | 2.80 | 8.60 |
| SDRR07630-150PHF | 15 | 56.94 | 71.2 | 2.6 | 11.5 | 1.9 | 11.4 | 2.40 | 13.00 |
| SDRR07630-220PHF | 22 | 86.84 | 108.6 | 2.0 | 18.5 | 1.4 | 17.2 | 2.00 | 18.50 |
| SDRR07630-330PHF | 33 | 122.68 | 153.5 | 1.7 | 24.6 | 1.1 | 26.2 | 1.60 | 27.60 |
| SDRR07630-470PHF | 47 | 202.60 | 253.3 | 1.4 | 37.3 | 1.0 | 42.7 | 1.30 | 41.50 |
| SDRR07630-680PHF | 68 | 320.20 | 400.3 | 1.1 | 61.2 | 0.8 | 61.5 | 1.00 | 64.20 |
| SDRR07630-101PHF | 100 | 445.50 | 557.0 | 0.9 | 91.3 | 0.65 | 78.5 | 0.90 | 91.30 |
| SDRR07630-151PHF | 150 | 649.70 | 812.2 | 0.7 | 137.8 | 0.5 | 133.0 | 0.7 | 137.8 |
| SDRR07630-221PHF | 220 | 932.30 | 1165.5 | 0.60 | 182.0 | 0.45 | 176.3 | 0.60 | 182.0 |
| SDRR07630-331PHF | 330 | 1292.0 | 1615.0 | 0.50 | 284.0 | 0.35 | 257.0 | 0.55 | 215.0 |
| SDRR07630-471PHF | 470 | 2150.0 | 2687.5 | 0.40 | 430.0 | 0.30 | 411.0 | 0.40 | 430.0 |

Note:

1. Open Circuit Inductance (OCL) test condition:100KHz,1.0 Vrms ,0Adc;(Ta=25°C).
2. Isat¹&Isat²: DC current that will cause inductance to drops 35%(Typical);(Ta=25°C).
3. Irms: DC current for an approximate temperature rise of 40°C without core loss ;(Ta=25°C).



SDRR07630 Series

Inductance vs. Current

