



SDRR10350 Series



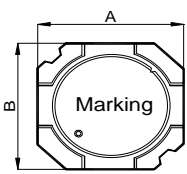
1. Features:

- Ferrite based SMD Inductor with lower core loss.
- Inductance Range:2.4uH to 150uH. Custom values are welcomed.
- High current output chokes, up to 13.0 Amp with 35% roll off.
- Foot print 10.3 x 10.3mm Max. Low profile 5.0mm Max. height
- Ideal for LED driver and High Density DC to DC converter application.
- Operating Temperature Range -55°C to + 130°C;RoHs&HF compliance.
- T & R Qtys: 800 pcs , 13" Reel ;

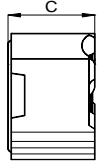
2. Mechanical Dimension(Unit:mm):



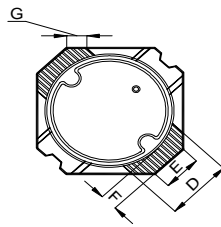
Type	SDRR10350
A	10.0±0.3
B	10.0±0.3
C	5.0(Max.)
D	4.5(Ref.)
E	2.1(Ref.)
F	1.9(Ref.)
G	1.7(Ref.)



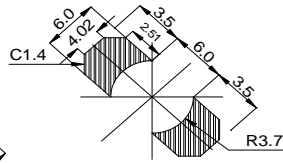
FRONT VIEW



SIDE VIEW



BOTTOM VIEW



Suggest PCB Layout

3. Electrical Characteristic of SDRR10350 Series:

Part Number	OCL (uH) ±25%	DCR (mΩ) Typ.	DCR (mΩ) Max.	Isat (A) @25°C	L@Isat (uH) Typ.	Isat (A) @105°C	L@Isat (uH) Typ.	Irms (A) @25°C	L@Irms (uH) Typ.
SDRR10350-2R4PHF	2.4	6.2	7.7	13.0	2.21	10.5	2.01	10.0	2.39
SDRR10350-3R6PHF	3.6	8.3	10.5	11.2	3.40	8.9	3.60	8.6	3.56
SDRR10350-5R0PHF	5.0	11.0	13.8	9.5	4.33	7.6	4.69	7.5	4.52
SDRR10350-6R6PHF	6.6	15.2	19.0	8.3	6.21	6.6	6.12	6.4	6.44
SDRR10350-8R5PHF	8.5	20.0	25.0	7.5	6.84	5.8	8.22	5.8	8.28
SDRR10350-100PHF	10.0	17.3	21.6	5.5	9.07	4.5	8.62	5.5	9.07
SDRR10350-120PHF	12.0	19.4	24.5	5.0	10.6	4.1	10.5	5.2	9.63
SDRR10350-150PHF	15.0	23.9	30.0	4.5	13.7	3.8	12.6	4.7	11.7
SDRR10350-180PHF	18.0	26.5	33.2	4.1	15.7	3.4	13.1	4.4	12.9
SDRR10350-220PHF	22.0	32.4	40.5	4.0	17.0	3.2	16.0	4.0	18.2
SDRR10350-270PHF	27.0	39.7	49.6	3.6	21.1	2.9	23.0	3.6	21.1
SDRR10350-330PHF	33.0	46.8	58.5	3.3	25.2	2.5	29.1	3.3	25.2
SDRR10350-390PHF	39.0	60.2	75.3	3.0	33.2	2.4	30.5	2.9	33.2
SDRR10350-470PHF	47.0	64.6	80.7	2.7	37.5	2.1	39.1	2.8	37.5
SDRR10350-560PHF	56.0	77.1	96.5	2.4	47.5	2.0	47.3	2.6	37.1
SDRR10350-680PHF	68.0	96.2	120.0	2.3	50.2	1.8	55.2	2.3	50.2
SDRR10350-820PHF	82.0	119.4	150.0	2.1	58.9	1.6	71.5	2.1	58.9
SDRR10350-101PHF	100.0	143.0	178.8	1.9	77.1	1.5	74.1	1.9	77.1
SDRR10350-121PHF	120.0	178.5	223.0	1.7	96.3	1.3	106.0	1.7	96.3
SDRR10350-151PHF	150.0	224.2	280.0	1.6	109.9	1.2	135.0	1.5	126.3

Note:

- 1.OCL (Open Circuit Inductance) and L@ Irms and L @Isat and DCR are measured at: 100KHz,1.0V @ 25°C.
- 2.Isat: DC current that causes inductance to drop by approximately 35% from OCL ;(Ta=25°C)
- 3.Irms: DC current that causes an approximate temperature rise (ΔT) of 40°C;(Ta=25°C)
4. Inductance Vs. DC bias curve, please see the next page to get more detail information.

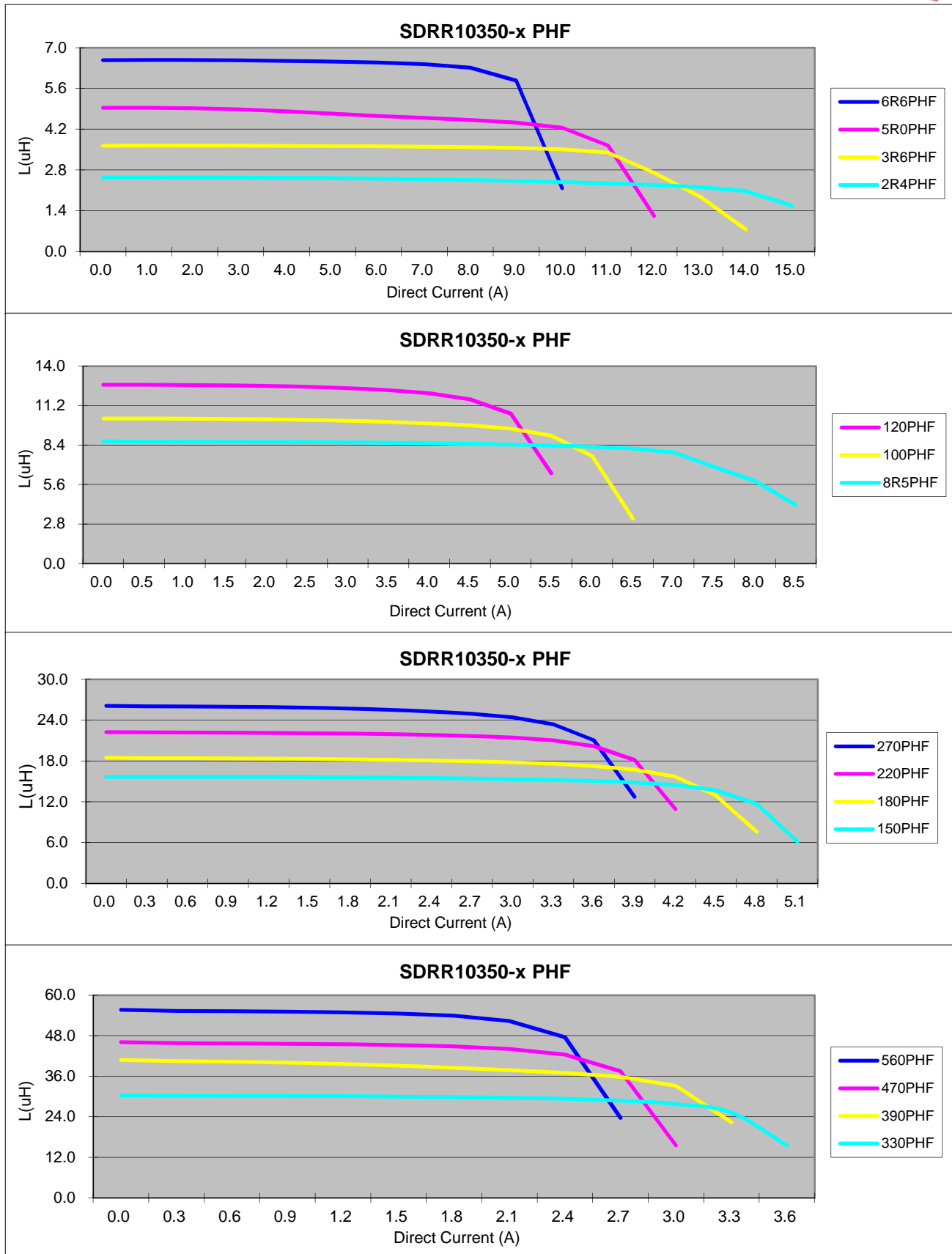
New York 1.914.347.2474 ●Taiwan 886.972.022.388 ●Shenzhen 86.755.8418.6263 ●Shanghai 86.21.5424.5141 ●Hong Kong 852.9688.9767

sales@inter-technical.com ● www.inter-technical.com

Revision B: 12/06/11



SDRR10350 Series





SDRR10350 Series

