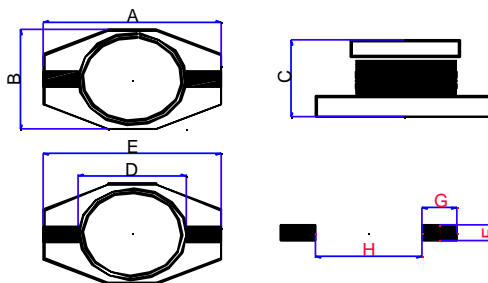


# BF5220 Series SMD Power Inductor

## SHAPE AND DIMENSIONS

### FEATURES:

- Equivalent to Coilcraft DO3316 series
- Inductance range from 1 $\mu$ H- 1000  $\mu$ H
- Operating temperature range -40°C +85°C
- Tape & Reel quantity 550 pieces



Dimensions (in mm)							
A	B	C	D	E	F	G	H
13.5 (max)	9.4 (max)	5.46 (max)	8.7 (max)	13.5 (max)	3.5 (ref)	3.5 (ref)	7.5 (ref)

PART NUMBER	INDUCTANCE $\mu$ H at 100KHz ( $\mu$ H $\pm$ 20%)	DCR Ohm(MAX)	Isat:10% Inductance Roll Off	Irms:40°C Temperature Rise
BF5220-1R0	1.0	0.009	14.40	11.88
BF5220-1R5	1.5	0.010	10.89	9.09
BF5220-2R2	2.2	0.012	9.27	7.65
BF5220-3R3	3.3	0.015	7.65	6.39
BF5220-4R7	4.7	0.018	6.48	5.40
BF5220-6R8	6.8	0.022	5.40	4.50
BF5220-100	10.0	0.029	4.32	3.51
BF5220-150	15.0	0.046	3.60	2.97
BF5220-220	22.0	0.068	3.06	2.52
BF5220-330	33.0	0.100	2.43	1.98
BF5220-470	47.0	0.140	2.10	1.71
BF5220-680	68.0	0.200	1.67	1.50
BF5220-101	100.0	0.300	1.38	1.14
BF5220-331	330.0	0.930	0.77	0.64
BF5220-471	470.0	1.270	0.66	0.54
BF5220-681	680.0	1.840	0.52	0.43
BF5220-102	1000.0	2.470	0.45	0.37

Inter-Technical, LLC., 175 Clearbrook Road, PO Box 535, Elmsford, NY 10523

Phone: 914-347-2474  
[www.inter-technical.com](http://www.inter-technical.com)

Fax: 914-347-7230  
[sales@inter-technical.com](mailto:sales@inter-technical.com)

Rev. 5.30.01 V.2.1