



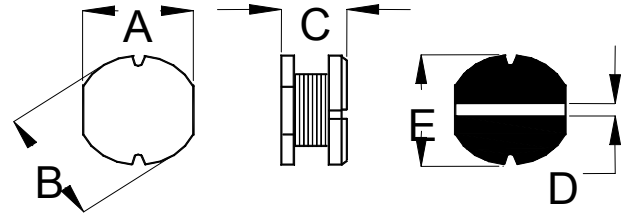
SD 104H SMD Power Inductor



Features:

- Low profile 4.5 mm Max. height.
- Inductance range 1 μ H ~560 μ H.
- Tape & Reel Quantities: 1~ 8.2 uH: 800 pcs per reel; 10uH and up: 1000 pcs per reel.
- H class wire is used to ensure solderability.
- Coplanarity = 0.10 mm.

Mechanical Dimmensions (Unit: mm)					
Part Number	A	B	C	D	E
SD104H	±0.3 9.0	±0.3 10.0	±0.5 4.0	Ref. 3.5	±0.5 10.2



Electrical Specifications				
PART NUMBER	L @ 100 kHz (μ H)	DCR Max. (Ω)	I _{sat} (Amp)	I _{rms} (Amp)
SD104H-1R0U	1.0 +40% -20%	0.007	10.00	8.50
SD104H-1R5MU	1.5±20%	0.011	9.18	7.62
SD104H-2R2MU	2.2±20%	0.016	7.29	6.05
SD104H-2R7MU	2.7±20%	0.018	6.48	5.38
SD104H-3R3MU	3.3±20%	0.020	5.85	4.86
SD104H-4R7MU	4.7±20%	0.025	4.73	3.92
SD104H-5R6MU	5.6±20%	0.030	4.23	3.51
SD104H-6R8MU	6.8±20%	0.034	3.87	3.21
SD104H-8R2MU	8.2±20%	0.045	3.51	3.06
SD104H-100MU	10.0±20%	0.053	3.06	2.97
SD104H-120MU	12.0±20%	0.061	2.70	2.84
SD104H-150LU	15.0±15%	0.070	2.52	2.65
SD104H-180LU	18.0±15%	0.081	2.25	2.36
SD104H-220LU	22.0±15%	0.088	1.98	2.08
SD104H-270LU	27.0±15%	0.100	1.94	2.03
SD104H-330KU	33.0±10%	0.120	1.71	1.80
SD104H-390KU	39.0±10%	0.151	1.53	1.61
SD104H-470KU	47.0±10%	0.170	1.49	1.56
SD104H-560KU	56.0±10%	0.199	1.44	1.51
SD104H-680KU	68.0±10%	0.223	1.26	1.32
SD104H-820KU	82.0±10%	0.252	1.17	1.23
SD104H-101KU	100.0±10%	0.344	1.08	1.13
SD104H-121KU	120.0±10%	0.396	0.99	1.04
SD104H-151KU	150.0±10%	0.544	0.86	0.90
SD104H-181KU	180.0±10%	0.621	0.81	0.85
SD104H-221KU	220.0±10%	0.721	0.68	0.71
SD104H-271KU	270.0±10%	0.949	0.55	0.58
SD104H-331KU	330.0±10%	1.100	0.51	0.54
SD104H-391KU	390.0±10%	1.245	0.47	0.49
SD104H-471KU	470.0±10%	1.526	0.43	0.45
SD104H-561KU	560.0±10%	1.904	0.38	0.40

- I_{sat}: 10% Inductance roll off.
- I_{rms}: 40 °C Temperature rise.
- Operating Temperature: -25 ~ 130 °C.