



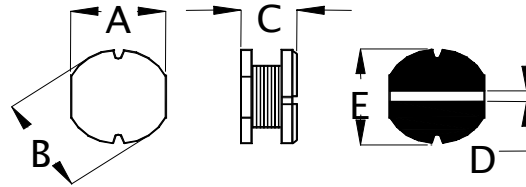
SD43 SMD Power Inductor



Features:

- Low Profile 3.5 mm Max. height.
- Inductance range $1\mu\text{H} \sim 820\mu\text{H}$.
- 1500 pcs per reel.

| Mechanical Dimmensions (Unit: mm) | | | | | |
|-----------------------------------|-----------|-----------|-----------|------|-----------|
| Part Number | A | B | C | D | E |
| SD43 | ± 0.3 | ± 0.3 | ± 0.3 | Ref. | ± 0.5 |
| SD43 | 4.0 | 4.5 | 3.2 | 1.0 | 4.5 |



| Electrical Specifications | | | | |
|---------------------------|---------------------|-----------------------|------------------------|------------------------|
| Part Number | L (μH) | DCR Max. (Ω) | I_{sat} (Amp) | I_{rms} (Amp) |
| SD43-1R0U | 1.0 +40% -20% | 0.0487 | 5.40 | 4.48 |
| SD43-1R2MU | 1.2 \pm 20% | 0.0520 | 4.77 | 3.96 |
| SD43-1R5MU | 1.5 \pm 20% | 0.0580 | 3.87 | 3.21 |
| SD43-1R8MU | 1.8 \pm 20% | 0.0637 | 3.60 | 2.99 |
| SD43-2R2MU | 2.2 \pm 20% | 0.0712 | 3.33 | 2.76 |
| SD43-2R7MU | 2.7 \pm 20% | 0.0787 | 2.97 | 2.47 |
| SD43-3R3MU | 3.3 \pm 20% | 0.0862 | 2.70 | 2.24 |
| SD43-3R9MU | 3.9 \pm 20% | 0.0937 | 2.52 | 2.09 |
| SD43-4R7MU | 4.7 \pm 20% | 0.1000 | 2.43 | 2.02 |
| SD43-5R6MU | 5.6 \pm 20% | 0.1257 | 2.12 | 1.76 |
| SD43-6R8MU | 6.8 \pm 20% | 0.1312 | 1.98 | 1.71 |
| SD43-8R2MU | 8.2 \pm 20% | 0.1462 | 1.80 | 1.67 |
| SD43-100MU | 10.0 \pm 20% | 0.1820 | 1.53 | 1.61 |
| SD43-120MU | 12.0 \pm 20% | 0.2100 | 1.35 | 1.42 |
| SD43-150LU | 15.0 \pm 15% | 0.2350 | 1.26 | 1.32 |
| SD43-180LU | 18.0 \pm 15% | 0.3380 | 1.17 | 1.23 |
| SD43-220LU | 22.0 \pm 15% | 0.3780 | 1.13 | 1.18 |
| SD43-270LU | 27.0 \pm 15% | 0.522 | 0.99 | 1.04 |
| SD43-330KU | 33.0 \pm 10% | 0.540 | 0.90 | 0.95 |
| SD43-390KU | 39.0 \pm 10% | 0.587 | 0.81 | 0.85 |
| SD43-470KU | 47.0 \pm 10% | 0.844 | 0.72 | 0.76 |
| SD43-560KU | 56.0 \pm 10% | 0.937 | 0.68 | 0.71 |
| SD43-680KU | 68.0 \pm 10% | 1.117 | 0.60 | 0.62 |
| SD43-820KU | 82.0 \pm 10% | 1.32 | 0.51 | 0.54 |
| SD43-101KU | 100.0 \pm 10% | 1.50 | 0.47 | 0.49 |
| SD43-121KU | 120.0 \pm 10% | 1.80 | 0.43 | 0.45 |
| SD43-151KU | 150.0 \pm 10% | 2.00 | 0.38 | 0.40 |
| SD43-181KU | 180.0 \pm 10% | 2.80 | 0.34 | 0.36 |
| SD43-201KU | 200.0 \pm 10% | 3.20 | 0.30 | 0.31 |
| SD43-221KU | 220.0 \pm 10% | 4.0 | 0.27 | 0.29 |
| SD43-271KU | 270.0 \pm 10% | 4.5 | 0.26 | 0.27 |
| SD43-331KU | 330.0 \pm 10% | 5.2 | 0.24 | 0.25 |
| SD43-471KU | 470.0 \pm 10% | 7.5 | 0.21 | 0.22 |
| SD43-561KU | 560.0 \pm 10% | 9.0 | 0.20 | 0.21 |
| SD43-821KU | 820.0 \pm 10% | 11.0 | 0.15 | 0.16 |

Notes:

1. I_{sat} : 10% Inductance roll off.
2. I_{rms} : 40 °C Temperature rise.
3. Operating Temperature: -25 ~130 °C.